

www.savichomes.com



The **Jonathon** Home



|| We bring your dreams into focus



*Illustrations depicted are an artists concept of the completed building only.
Illustrations may show optional features which may not be included in the base price.*

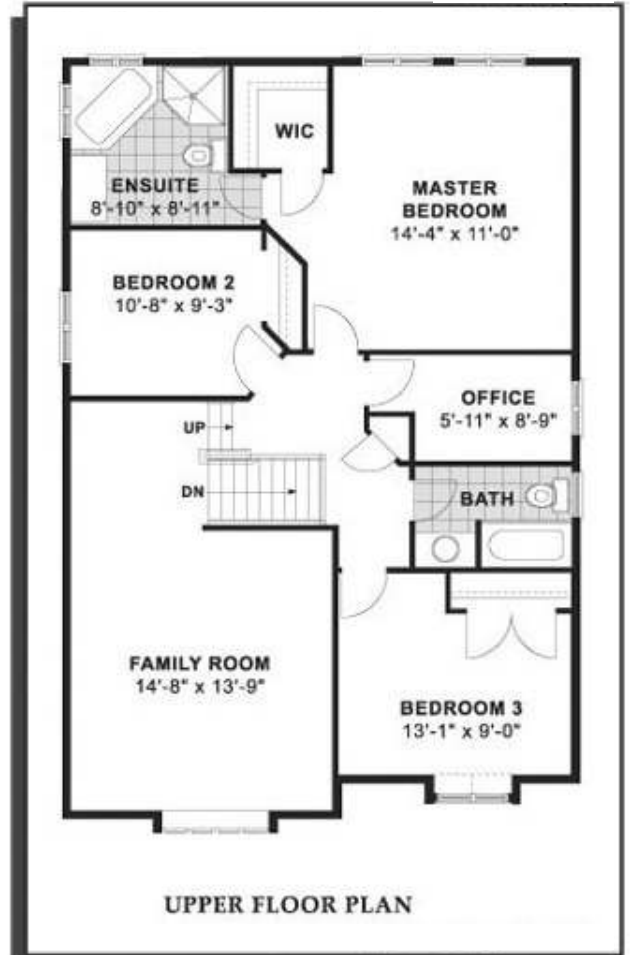
Quality & Trust

You will feel right at home in this new neighbourhood, close to amenities including shopping, schools and extensive natural areas.

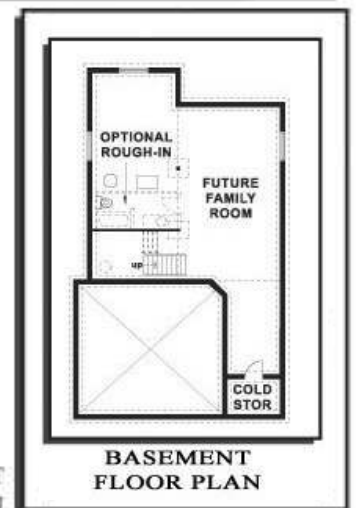
The Jonathon Home



MAIN FLOOR PLAN



UPPER FLOOR PLAN



BASEMENT FLOOR PLAN

Your new Jonathon home will include...

- Quality Savic Homes craftsmanship
- Open concept design
- Ceramic tile in bathrooms & kitchen/dining area
- Covered porch

Specifications and plans are subject to change without notice, E.G.O.E. Actual usable floor space may vary from stated floor area. All sizes approximate. Builder reserves the right to alter plans. Ask your sales representative for more information.